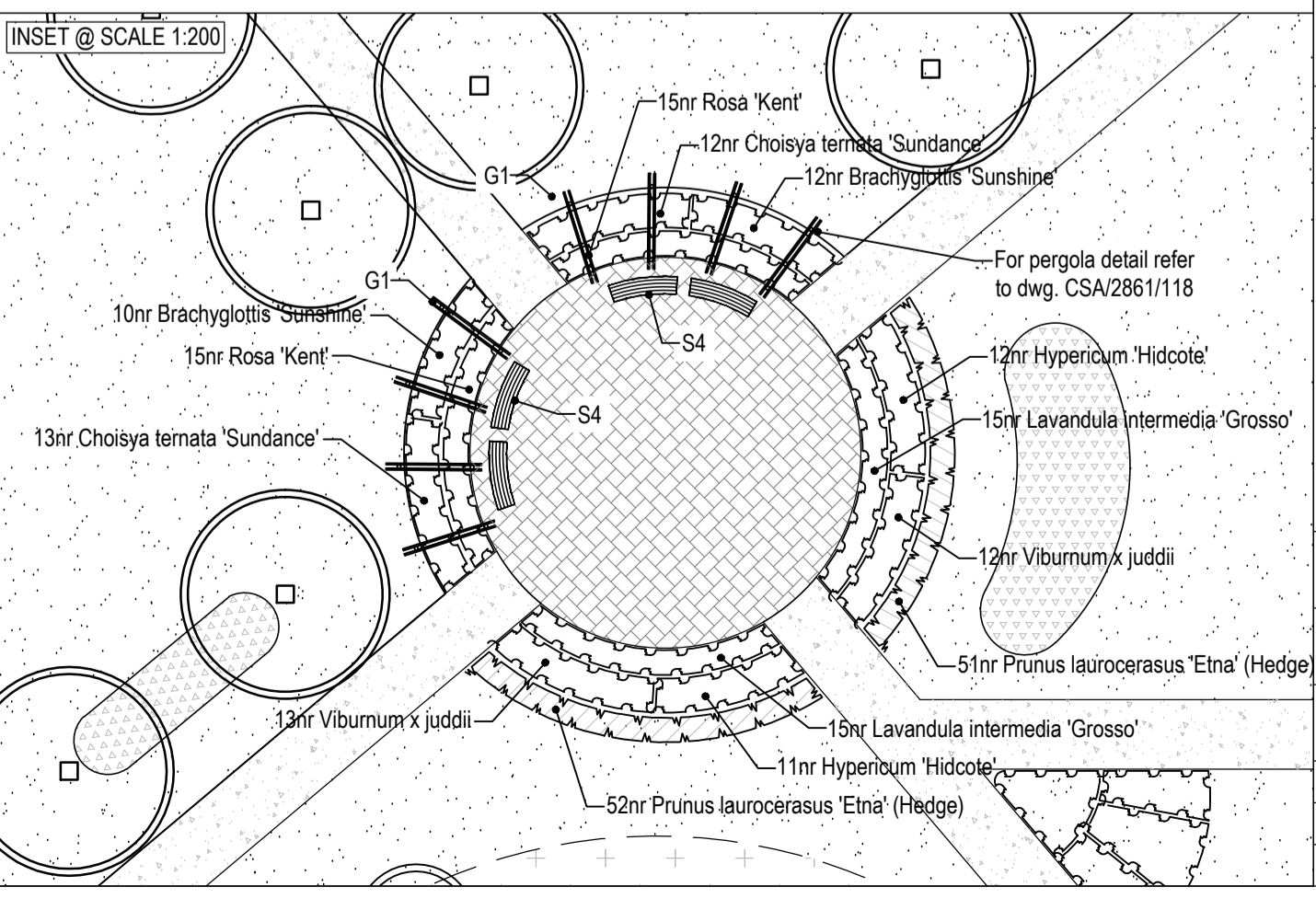


PLANT SCHEDULE

City	Name	Common Name	Age	Height	Form	Grth	ChSbn	Bks	Roz	Ctr	Measure Unit	Density (no/20m ²)	Centres		
Herbaceous -															
48	<i>Phragmites australis</i>	Common reed									CL	125cc	m ²	3.00	0.600
49															
Herbaceous - Bulb															
448	<i>Crocus chrysanthus</i>	Blue Bird									BB	1.5-2c	m ²	20.00	0.450
553	<i>Narcissus pseudonarcissus</i>	Wild daffodil									BB	1.5-2c	m ²	20.00	0.225
1002															
Herbaceous - Fern/Rush/Sedge															
306	<i>Carex riparia</i>	Greater pond sedge			FL						Ce	125cc	m ²	5.00	0.450
76	<i>Juncus effusus</i>	Common reed			FL						Ce	125cc	m ²	5.00	0.450
533	<i>Typha angustifolia</i>	Lesser bulrush			CL						PD	125cc	m ²	5.00	0.450
915															
Herbaceous - Grass															
40	<i>Miscanthus sinensis</i>	Japanese Silver grass									C	SL	m ²	5.00	0.450
41	<i>Miscanthus sinensis</i>	Morning Light									C	SL	m ²	5.00	0.450
234	<i>Phalaris arundinacea</i>	Gardeners' galium, Reed Canary			FL						Ce	125cc	m ²	5.00	0.450
331															
Marginal Mix															
47	<i>Calla palustris</i>	Marsh Marigold			FL						Ce	125cc	m ²	5.00	0.450
69	<i>Carex acutiformis</i>	'Lesser Pond Sedge'			FL						Ce	125cc	m ²	5.00	0.450
69	<i>Carex riparia</i>	Pond sedge			FL						Ce	125cc	m ²	5.00	0.450
47	<i>Juncus effusus</i>	Common reed			FL						Ce	125cc	m ²	5.00	0.450
222															
Shrub -															
41	<i>Brachyglottis</i>	Sunshine									C	SL	m ²	3.00	0.600
30	<i>Crocus tomasii</i>	Sandwich									C	SL	m ²	3.00	0.600
140	<i>Cornus alba</i>	Sibirica									C	SL	m ²	3.00	0.600
138	<i>Cornus sanguinea</i>	Mid-Winter Fire									C	SL	m ²	3.00	0.600
340	<i>Cornus sericea</i>	Flaviviramea									C	SL	m ²	3.00	0.600
15	<i>Escallonia</i>	Apple Blossom									C	SL	m ²	3.00	0.600
71	<i>Hebe</i>	Metra									C	SL	m ²	3.00	0.600
23	<i>Hebe</i>	Metra									C	SL	m ²	3.00	0.600
22	<i>Hebe</i>	Metra									C	SL	m ²	3.00	0.600
42	<i>Hebe</i>	Metra									C	SL	m ²	3.00	0.600
13	<i>Hypericum</i>	calycinum									C	SL	m ²	3.00	0.600
23	<i>Hypericum</i>	'Hidcot'									C	SL	m ²	3.00	0.600
40	<i>lex crenata</i>	'Golden Gem'									C	SL	m ²	3.00	0.600
30	<i>Lavandula</i>	intermedia 'Grosso'									C	SL	m ²	3.00	0.600
15	<i>Lonicera</i>	hedge 'Magpie'									C	SL	m ²	3.00	0.600
20	<i>Phlox</i>	x fraseri 'Red Robin'									C	SL	m ²	3.00	0.600
25	<i>Prunus</i>	laurocerasus 'Otto Luyken'									C	SL	m ²	3.00	0.600
31	<i>Salix</i>	alba vitulina 'Sibirica'									C	SL	m ²	3.00	0.600
25	<i>Viburnum</i>	x juddii									C	SL	m ²	3.00	0.600
1095															
Shrub - Hedgerow															
103	<i>Prunus laurocerasus</i>	'Etna' (Hedge)									C	SL	m	5.00	0.200
103															
Shrub - Rose															
30	<i>Rosa</i>	'Kent'									C	SL	m ²	3.00	0.600
30															
Thicket Mix (TH2)															
- Individual varieties to be planted in groups of approximately 5:10															
9	<i>Cornus sanguinea</i>	Common dogwood									B	m ²	0.44	1.500	
17	<i>Corylus avellana</i>	Hazel, Cobnut									B	m ²	0.44	1.500	
11	<i>Ligustrum vulgare</i>	Common privet									B	m ²	0.44	1.500	
9	<i>Rosa canina</i>	Dog rose									B	m ²	0.44	1.500	
11	<i>Viburnum lantana</i>	Wayfaring tree									B	m ²	0.44	1.500	
57															
Tree -															
6	<i>Acer platanoides</i>	'Deborah'									RB	m	0.00	0.000	
8	<i>Alnus glutinosa</i>	Common alder									RB	m	0.00	0.000	
1	<i>Betula pubescens</i>	'Fascination'									RB	m	0.00	0.000	
2	<i>Betula pubescens</i>	Downy Birch, White Birch									RB	m	0.00	0.000	
1	<i>Fagus sylvatica</i>	Common beech									RB	m	0.00	0.000	
5	<i>Populus tremula</i>	Aspen									RB	m	0.00	0.000	
2	<i>Prunus avium</i>	'Plena'									RB	m	0.00	1.000	
2	<i>Tilia cordata</i>	Small-leaved lime									RB	m	0.00	0.000	
16	<i>Tilia cordata</i>	'Green Spire'									RB	m	0.00	1.000	
53															
3882															

LEGEND

- APPLICATION BOUNDARY
- EXISTING TREES / VEGETATION
- TREES / VEGETATION REMOVED
- Softworks
- WOODLAND MIX
- THICKET MIX
- SEMI-MATURE TREE
- EXTRA HEAVY STANDARD TREE
- STANDARD TREE
- NATIVE HEDGE PLANTING
- ORNAMENTAL SHRUB
- AQUATIC PLANTING
- BULB PLANTING
- AMENITY GRASS SEEDING
- WILDFLOWER MEADOW MIX
- WILDFLOWER MEADOW MIX
- WILDFLOWER MEADOW MIX
- WILDFLOWER MEADOW MIX
- Hardworks Proposals
- BOUND AGGREGATE FOOTPATH
- CONCRETE TEGULA PAVING
- COMPOSITE TIMBER DECKING
- Boundary Treatment
- BOUNDARY TYPE B
- BOUNDARY TYPE C
- BOUNDARY TYPE F
- Street Furniture
- SEAT
- LITTER BIN
- TREATED SOFTWOOD TIMBER PERGOLA
- BOLLARD
- SIGNAGE



Notes:

- For Planting Specification refer to CSA/2861/108
- For Location Plan refer to CSA/2861/100

Rev	Date	By	Description
F	17.11.20	SW	Section of proposed hedgerow removed and bench relocated on deck
E	07.02.20	SS	Trees co-ordination with pipeworks
D	11.10.16	AB	Deep Water signs added around pond
C	28.09.16	AM	Updated to reflect new boys layout
B	30.08.16	JC	Updated to reflect new road layout
A	20.04.16	AM	Red Line Boundary updated

CSA environmental

Dixies Barns, High Street,
Ashwell, Hertfordshire SG7 5NT

01462 743647
ashwell@csaenvironmental.co.uk
csaenvironmental.co.uk

Project: West Durrington, Worthing Phase 1B
Title: Central Park Landscape Proposals

Client: Persimmon Homes Ltd, Taylor Wimpey UK Ltd, Bovis Homes Ltd.

Scale: 1:250 @ A1 Drawn: TB
Date: April 2016 Checked: GC
Drawing No: CSA/2861/101 Rev: F